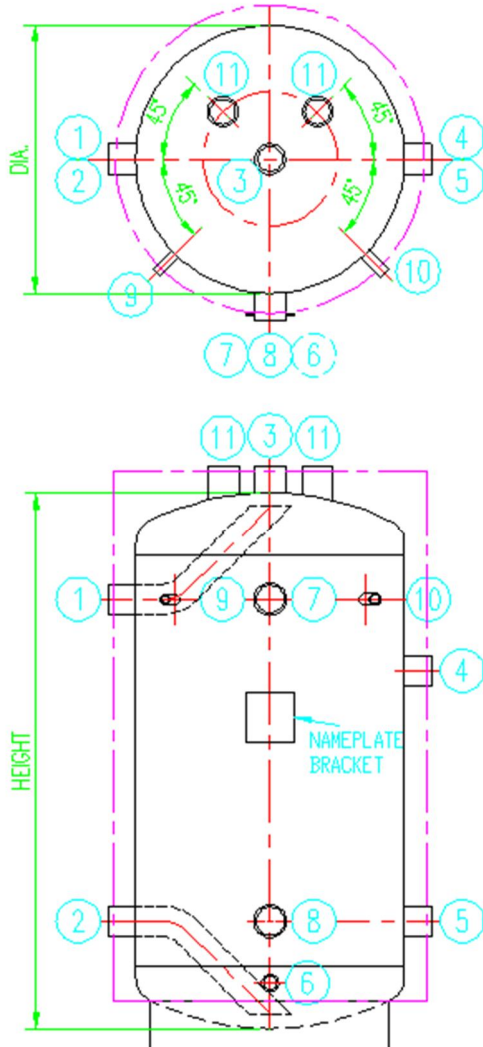


Carbon Steel BBU Range



The BBU range is a range of carbon steel buffer vessels which will be available on an express delivery. The vessels are PED compliant and suitable for working pressures of up to 6.30 Bar G.

The vessels are insulated as standard. Immersion heaters can be supplied at an extra cost.

Applications include LTHW Buffer Vessel, chilled water storage and combined heat and power units.

Due to their quick turnaround, connection sizes and positions are as standard.

If you require alternative connection positioning or sizing please contact our sales team for a quotation.

Please note:

Connection 1 & 2 in all instances are fitted with internal sparge pipes.

Connection 7 & 8 are plugged in all instances.

Connection positions differ relating to shell dimensions but remain in the same arrangement throughout the entire range



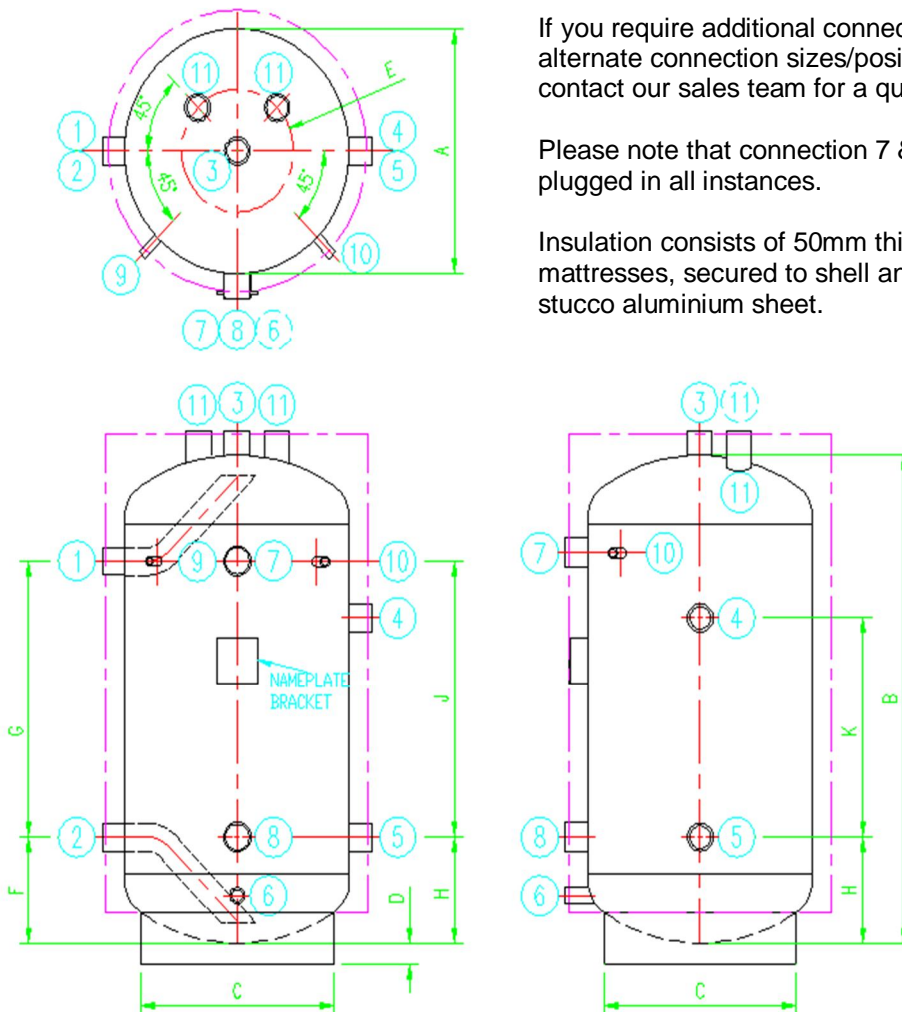
Manufactured in the UK and delivered within 48 hours of order!

Size (Litres)	Dia. (mm)	Height (mm)	Connection Sizes						
			1-5	6	7	8	9	10	11 (x2)
300	600	1200	2"	1"	2.1/2"	2.1/2"	3/8"	1/2"	2.1/2"
400	600	1541	2"	1"	2.1/2"	2.1/2"	3/8"	1/2"	2.1/2"
500	600	1950	2"	1"	2.1/2"	2.1/2"	3/8"	1/2"	2.1/2"
600	750	1550	2"	1"	2.1/2"	2.1/2"	3/8"	1/2"	2.1/2"
700	750	1700	2"	1"	2.1/2"	2.1/2"	3/8"	1/2"	2.1/2"
800	750	1950	2"	1"	2.1/2"	2.1/2"	3/8"	1/2"	2.1/2"
1000	900	1750	2"	1"	2.1/2"	2.1/2"	3/8"	1/2"	2.1/2"
1250	900	2100	DN100	1.1/2"	2.1/2"	2.1/2"	3/8"	1/2"	2.1/2"
1500	1100	1750	DN100	1.1/2"	2.1/2"	2.1/2"	3/8"	1/2"	2.1/2"
1750	1100	2080	DN100	1.1/2"	2.1/2"	2.1/2"	3/8"	1/2"	2.1/2"
2000	1100	2275	DN100	1.1/2"	2.1/2"	2.1/2"	3/8"	1/2"	2.1/2"
2500	1220	2388	DN100	1.1/2"	2.1/2"	2.1/2"	3/8"	1/2"	2.1/2"
3000	1220	2485	DN100	1.1/2"	2.1/2"	2.1/2"	3/8"	1/2"	2.1/2"

BBU Connection Positions



Unit	Dimension (mm)									
	A	B	C	D	E	F	G	H	J	K
BBU300	600	1200	513	50	150	260	680	260	680	540
BBU400	600	1541	513	50	150	260	1020	260	1020	770
BBU500	600	1950	513	50	150	260	1430	260	1430	1040
BBU600	750	1550	643	50	200	320	930	320	930	710
BBU700	750	1700	643	50	200	300	1100	300	1100	830
BBU800	750	1950	643	50	200	300	1350	300	1350	1000
BBU1000	900	1750	776	75	250	340	1090	340	1090	820
BBU1250	900	2100	776	75	250	370	1370	370	1370	1030
BBU1500	1100	1750	943	75	300	430	900	430	900	730
BBU1750	1100	2080	943	75	300	430	1230	430	1230	950
BBU2000	1100	2275	943	75	300	430	1425	430	1425	1080
DPS2500	1220	2388	1084	75	350	430	1525	430	1525	1155
DPS3000	1220	2845	1084	75	350	430	1980	430	1980	1455



If you require additional connections, or alternate connection sizes/positions, please contact our sales team for a quotation.

Please note that connection 7 & 8 are plugged in all instances.

Insulation consists of 50mm thick fibreglass mattresses, secured to shell and secured in stucco aluminium sheet.